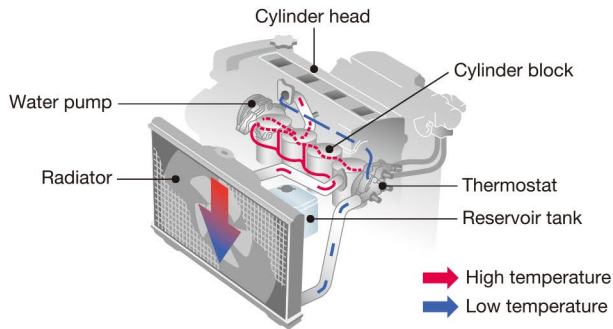
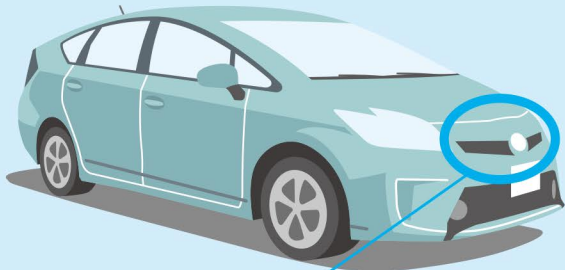
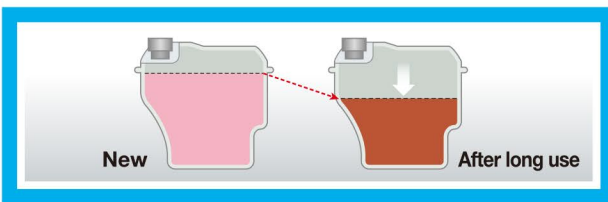


Super Long Life Coolant (SLLC)



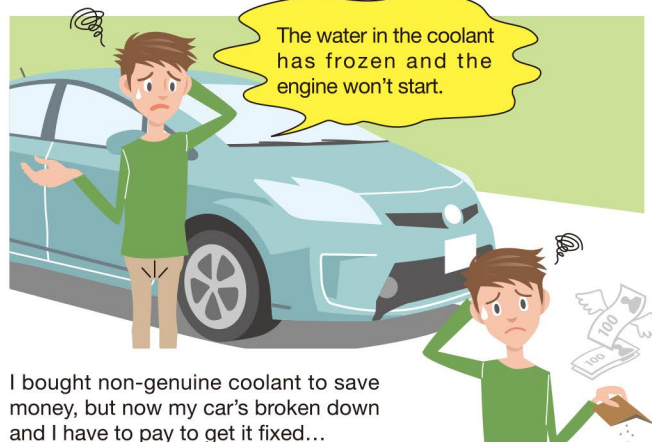
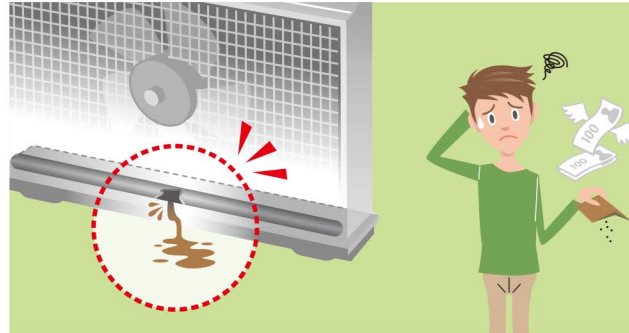
A car's engine gets very hot when it is running. SLLC circulates around the car's engine and serves the role of cooling the engine down. SLLC also prevents the metallic components of the cooling system, such as the radiator, from rusting. Furthermore, SLLC's anti-freeze properties prevent freezing in cold conditions.

Over a long period of use, engine coolant deteriorates. As the quantity of rust inhibitor in the coolant decreases and oxidization progresses, it loses its anti-rust and anti-corrosion properties. Therefore, it is important that the engine coolant is periodically replaced.



If you think your engine coolant may need to be checked, we recommend you bring your car into a Toyota dealer for an inspection.

If you use old or non-genuine coolant, you could find yourself in this situation...



I bought non-genuine coolant to save money, but now my car's broken down and I have to pay to get it fixed...

Can you tell which products are genuine?

Beware of non-genuine products!

They may look the same, but they don't offer the same performance.



Genuine



Non-genuine

When replenishing or replacing the coolant, you should only use Genuine Toyota SLLC!



If you replenish or replace the coolant with a non-genuine coolant that contains a high proportion of water or with just regular water, it will not properly cool the engine, and it will not prevent rusting or freezing. Furthermore, not only does non-genuine coolant not offer the same performance as Genuine Toyota SLLC, the replacement cycle is also shorter.

Trust your Toyota dealer for the best service.

Have complete confidence, knowing that your car will be serviced using only Genuine Toyota Parts.

